



# **GLENDALE-LOS ANGELES GARDEN RIVER BRIDGE PROJECT**

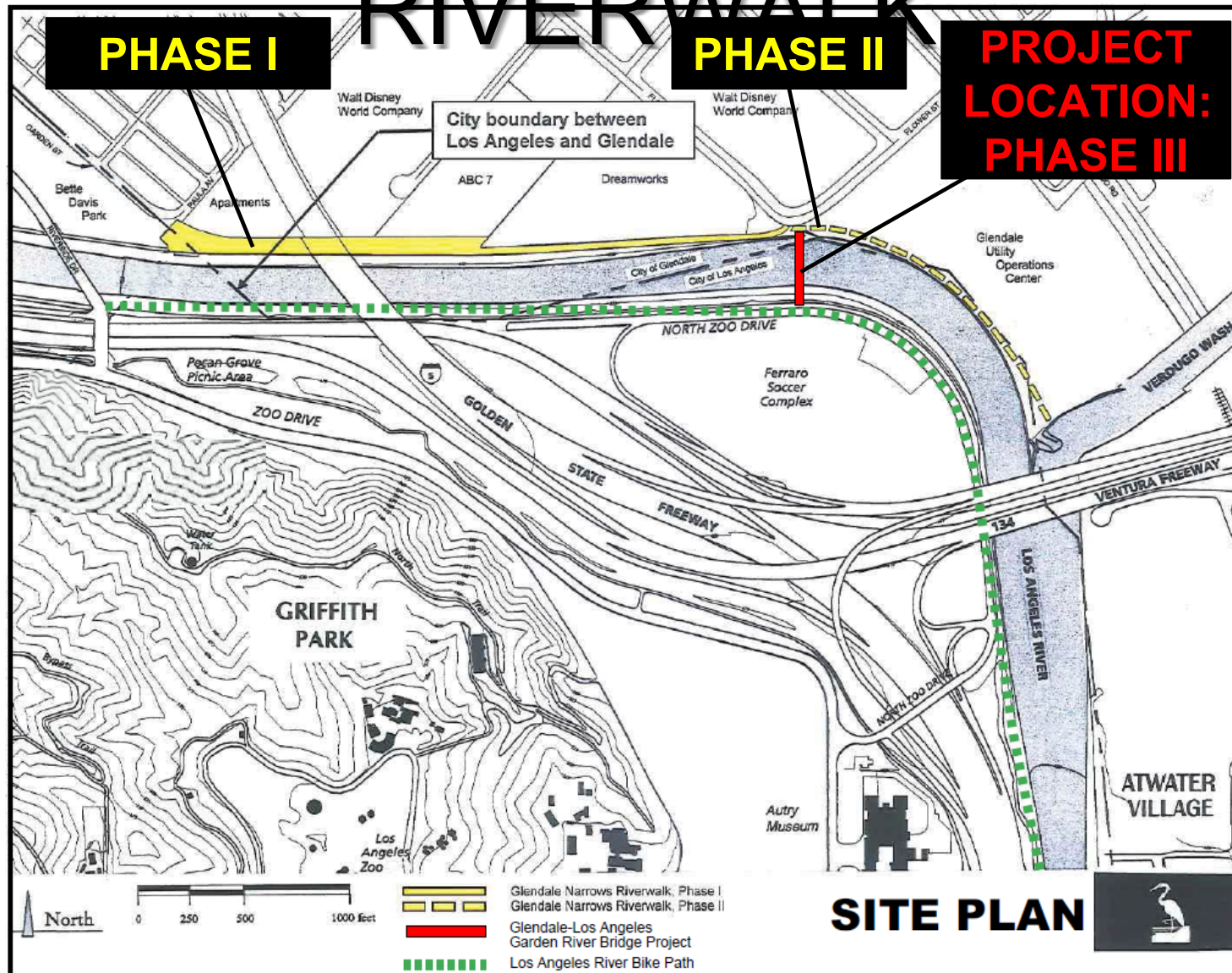
**Rancho Neighborhood Update**

**Department of Public Works**

**January 17, 2023**

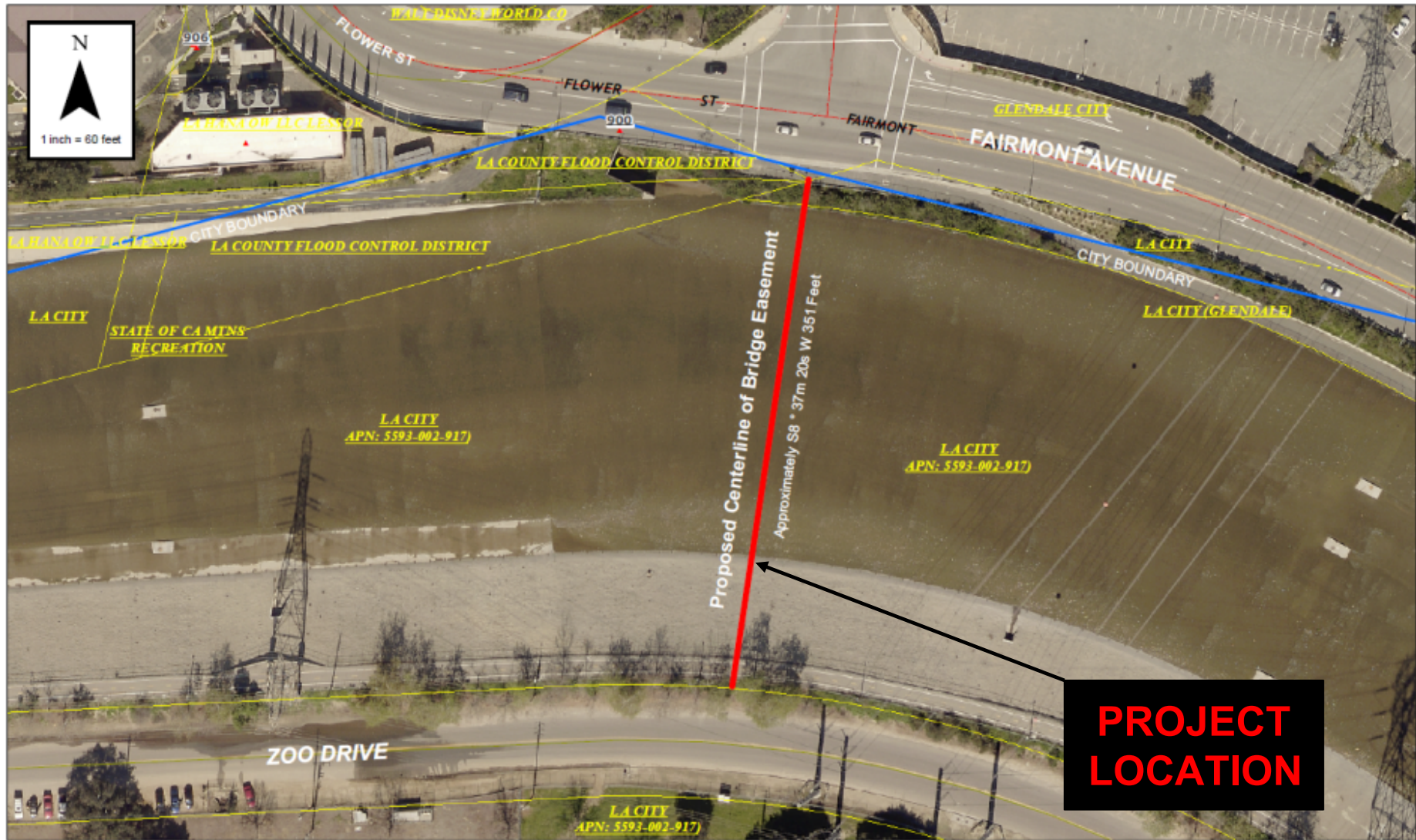
# GLENDALE NARROWS

## RIVERWALK





# AERIAL PLAN VIEW



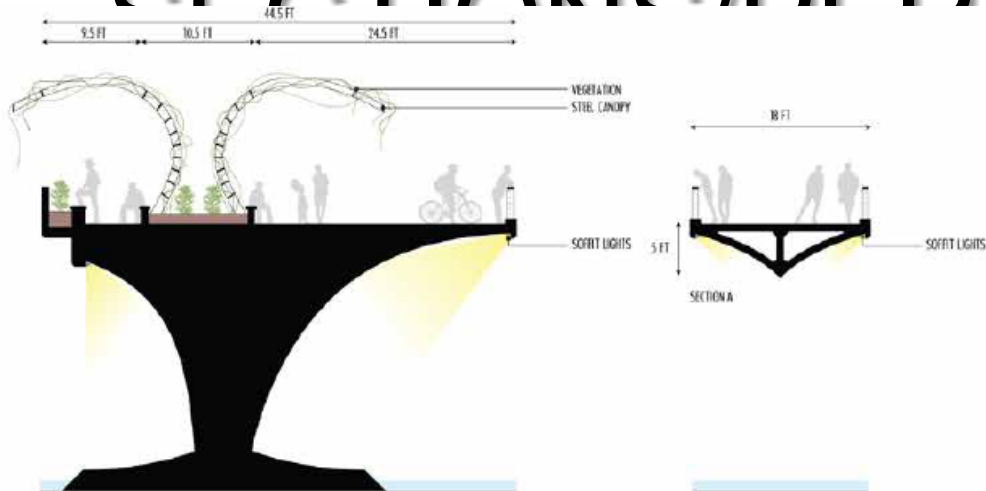
# SCOPE OF WORK

- Phase III of Glendale Narrows Riverwalk Improvements
- 320' Curvilinear Bridge
  - Box-girder structure, safety railings, safety lighting, access gates, trash receptacles, 14' width
- 2 Shaded Seating/Viewing Pods
  - Shade trees, landscaping, signage, 45' width
- 350' Curvilinear Planter Seating Area
- Bicycle/Pedestrian Signing and Striping (No Equestrian Access)
- Bridge Landing in Glendale Area
  - Realign Riverwalk path, construct retaining walls, handrails, plantings
- Bridge Landing in Los Angeles Area
  - Realign River bike path, ADA access ramp/stairs/pedestrian crossing to Ferraro Fields



# BRIDGE

## SECTIONAL/REFLECTIVE/EC



CANOPY SECTION

SCALE: 1/4"=1'-0"

TYPICAL SECTION

SCALE: 1/4"=1'-0"



FAN CANOPY FROM BELOW



FAN CANOPY FROM ABOVE



# BRIDGE PERSPECTIVES

PAV CANOPY EXPERIENCE



DIAGRID CANOPY ALTERNATIVE



TRUSS CANOPY ALTERNATIVE



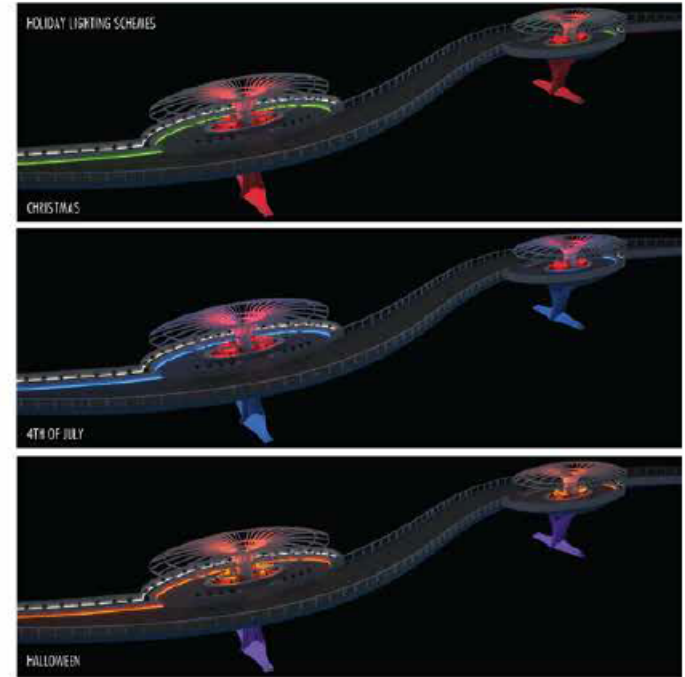
PAV CANOPY BRIDGE PERSPECTIVE



# BRIDGE PERSPECTIVES



# LIGHTING CONCEPTS





# COMMUNITY NOTIFICATION

- ✓ **WORKSHOP 1: 9/11/2014**
  - General Presentation
  - Varying Bridge Types Presented
- ✓ **WORKSHOP 2: 10/29/2014**
  - Garden Bridge Concept Introduced
- ✓ **WORKSHOP 3: 12/11/2014**
  - 2 Seating/Viewing Pods Developed



# PROJECT DETAILS

JUL 2020-MAY 2022

PA&ED

JUL 2020-FEB 2025

PSE

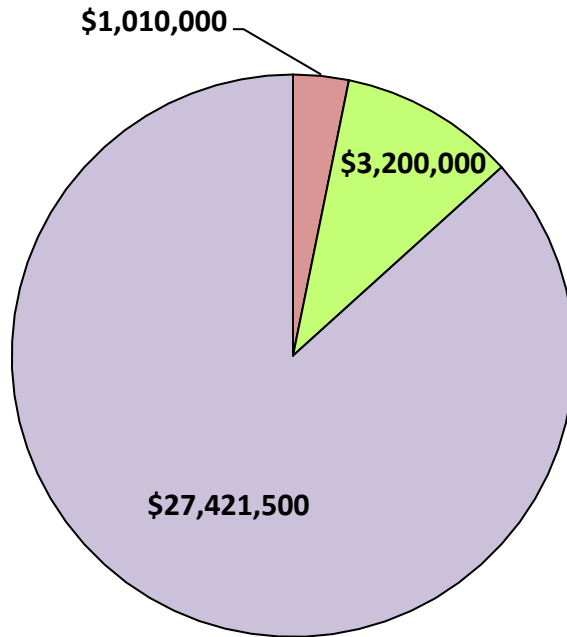
MAR 2025-JUL 2028

CONSTRUCTION

JUL 2028 & ON

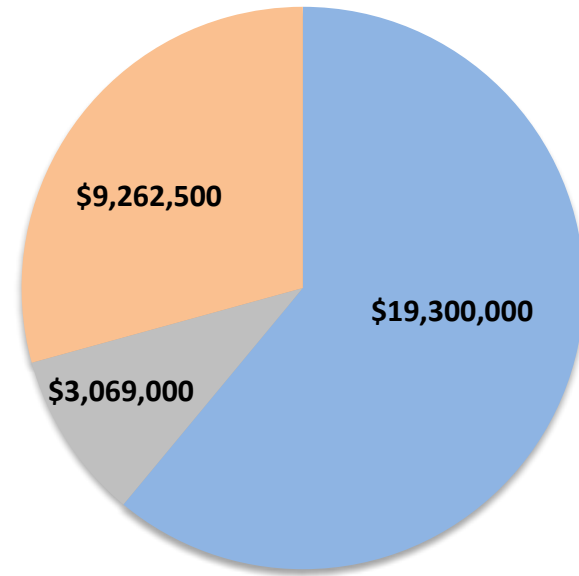
M&O

## ESTIMATED COSTS



■ PA&ED ■ PS&E ■ CONSTRUCTION

## FUNDING SOURCE



■ PROP 68 ■ PROP C ■ MEASURE R





# PROGRESS & EXPECTATIONS

- ✓ Planning/design started 2/1/2022 with Project Consultant Team
- ✓ Schematic Design under review for bridge canopies
- ✓ Draft Environmental Report in progress
- ✓ Submitted project overview to LADWP for review/approval
- ☐ Submit project to City of LA Departments for review
- ☐ Hold Environmental Scoping and Project Review Public Meetings
- ☐ Establish Land Use Agreement with City of LA
- ☐ Establish O&M Agreement with City of LA/USACE/LA County
- ☐ Complete Environmental Document then Project Design
- ☐ Begin and Complete Project Construction





*#MyGlendale*



END